

Kits to convert Analogue to Digital Universal Testing Machines



Need – Why to Convert?

- * *Analogue UTM*
- * *Load Ranges to be selected. 10%, 25%, 50% & 100%.*
- * *Paper based non uniform graphs.*
- * *Large no. of friction points hence lower efficiency.*
- * *High time for manual calculations.*
- * *No auto Reporting.*
- * *No analysis of results.*

- * **Digital UTM**
- * **Has Single Range – 0 to 100 %.**
- * **Digital graphs.**
- * **Only 3 points of friction, hence higher efficiency.**
- * **Lower time for auto calculations.**
- * **Auto Reporting.**
- * **Analysis of results.**

How it looks after conversion!

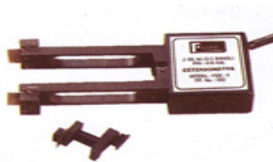


Different Elements of Kit



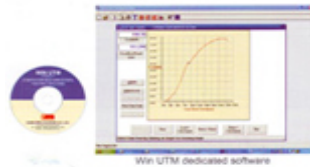
DAS Panel

Pressure
Transducer



Extensometer

Cables



Software

Rotary Encoder



Different Types of Kit



- * [CKUTM-SERVO-EXE](#)
- * [CKUTM-SERVO](#)
- * [CKUTM-EXE](#)
- * [CKUTM](#)
- * [CKUTM-KRUTAM-EXE](#)
- * [CKUTM-KRUTAM](#)

CKUTM-SERVO-EXE



- DAS Panel – **Fasne** Make
- Opto-Hydraulic Servo Valve
- Extensometer – **Fasne** Make
- Pressure Cell
- Rotary Encoder
- Cables
- Software
- Coloring of Old Machine
- NPL / NABL Calibration
- Training and 1 Yr. Maintenance Agreement

CKUTM-SERVO



- DAS Panel – **Fasne** Make
- Opto-Hydraulic Servo Valve
- Pressure Cell
- Rotary Encoder
- Cables
- Software
- Coloring of Old Machine
- NPL / NABL Calibration
- Training and 1 Yr. Maintenance Agreement

CKUTM-EXE



- DAS Panel – **Fasne** Make
- Extensometer – **Fasne** Make
- Pressure Cell
- Rotary Encoder
- Cables
- Software
- Coloring of Old Machine
- NPL / NABL Calibration
- Training and 1 Yr. Maintenance Agreement

CKUTM



- DAS Panel – **Fasne** Make
- Pressure Cell
- Rotary Encoder
- Cables
- Software
- Coloring of Old Machine
- NPL / NABL Calibration
- Training and 1 Yr. Maintenance Agreement

CKUTM-KRUTAM-EXE



- DAS Panel – **Krutam** Make
- Extensometer – **Krutam** Make
- Pressure Cell
- Rotary Encoder
- Cables
- Software
- Coloring of Old Machine
- NPL / NABL Calibration
- Training and 1 Yr. Maintenance Agreement

CKUTM-KRUTAM



- DAS Panel – **Krutam** Make
- Pressure Cell
- Rotary Encoder
- Cables
- Software
- Coloring of Old Machine
- NPL / NABL Calibration
- Training and 1 Yr. Maintenance Agreement

Contact US



* Krutam Technosolutions Pvt. Ltd.

* www.krutam.com

Thank You



- * Since 2013 we have converted nearly 45 UTM's.
- * UTM's age dated back from 1980 to 2014.
- * We love our job and we have full faith in GOD!
- * We love to Help you in your work.